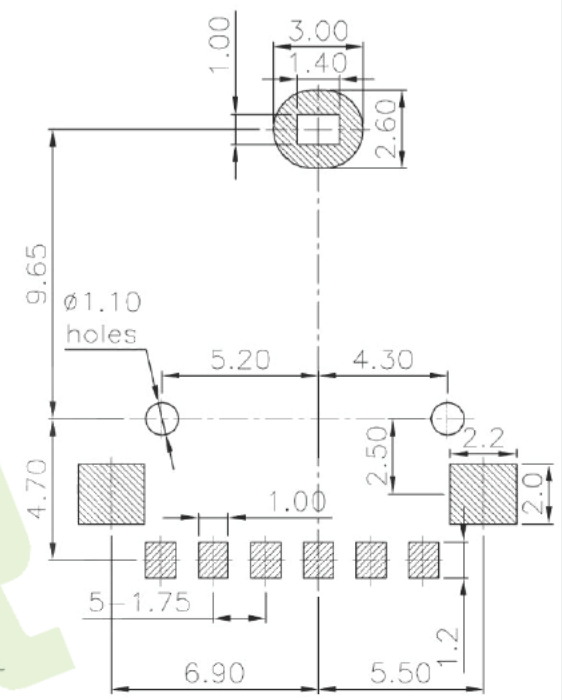
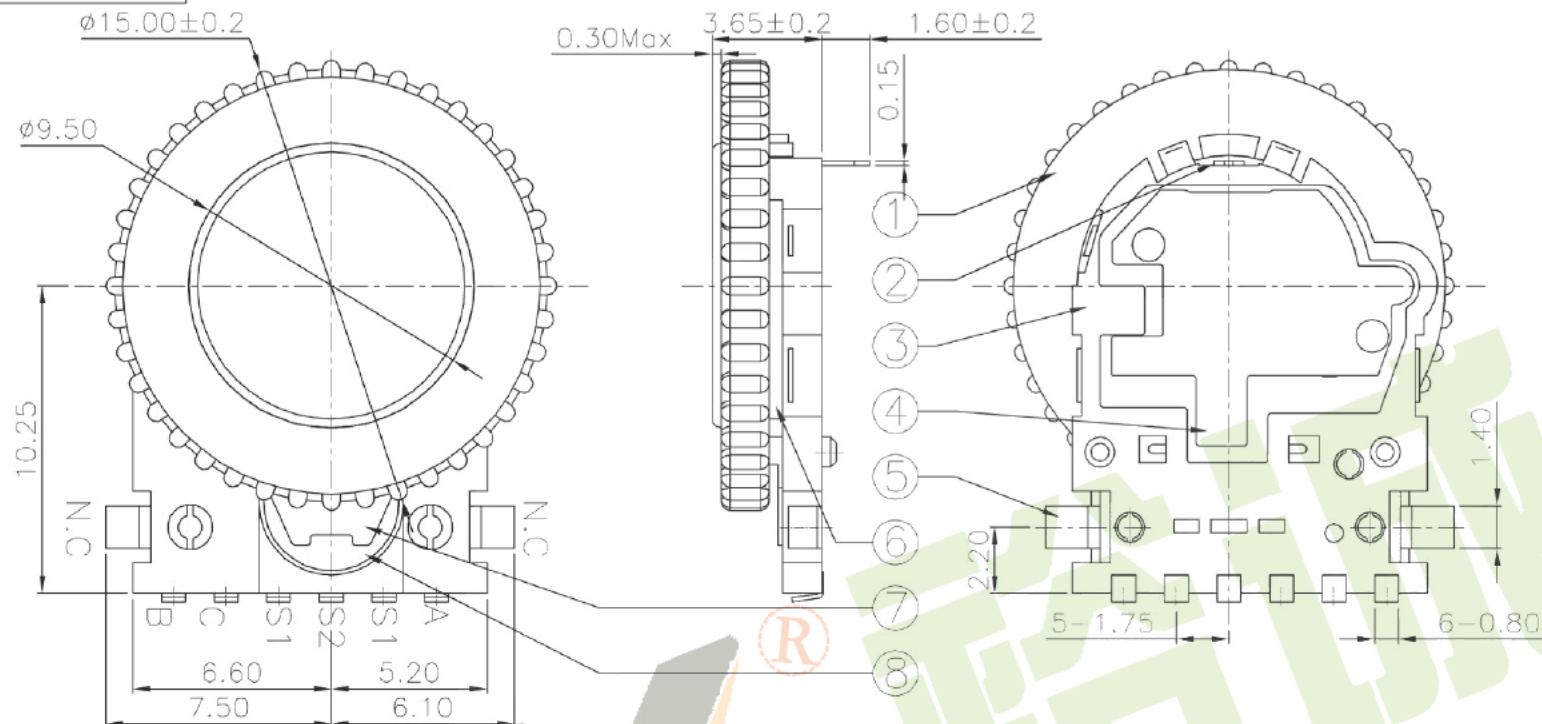
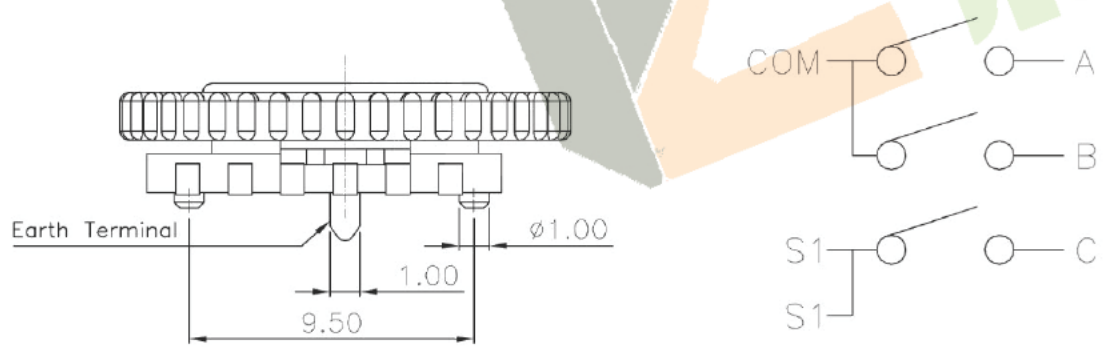


ROHS



PCB Layout (Pattern side)

NOTE:
Operating Force: 500 ± 50 gf
Travel: 15 Pulses $0.3\text{mm} \pm 0.1\text{mm}$



Circuit Diagram

⑩	Dust cover	—	1	Kapton Film	Yellow	—
⑨	Spring plate	—	1	SUS	Natural	—
⑧	Contact	—	1	F.Ag/SUS	Natural	—
⑦	Knob	—	1	LCP	Black	—
⑥	Tuning Knob 2	—	1	LCP	Black	—
⑤	Terminal	—	8	Brass(0.15t)	Plating silver	—
④	Gasket	—	1	Aluminum	Plating Stannum	—
③	Base	—	1	LCP	Black	—
②	Earth Terminal	—	1	Brass(0.15t)	Plating silver	—
①	Tuning Knob 1	—	1	LCP	Black	—
ITEM	PART NAME	TER'NO.	QTY.	MATERIAL	FINISHING	REMARK

APPROVALS		DATE	深圳市裕诚电子有限公司 SHENZHEN YUCHENG ELECTRONICS CO., LTD					
DRAWN	J.X.Zhang	2013/7/25						
CHECKED			WEBSITE www.ycelectron.com					
APPROVALS			PART NO. M1-5378G					
TOLERANCES ARE		$30 \sim 125$ ± 0.30 $10 \sim 30$ ± 0.20 $5 \sim 10$ ± 0.15 ~ 5 ± 0.10	ANGLE $\pm 2'$	UNIT: mm	SCALE: 1:1	PROJ:		
ECN NO.	REV.	DATE.	DESCRIPTION.	CHANGE.	CHECK.	APPRO.	DRAWING NO.	SHEET 1 OF 1

ECN NO.	REV.	DATE.	DESCRIPTION.	CHANGE.	CHECK.	APPRO.
	A		NEW			