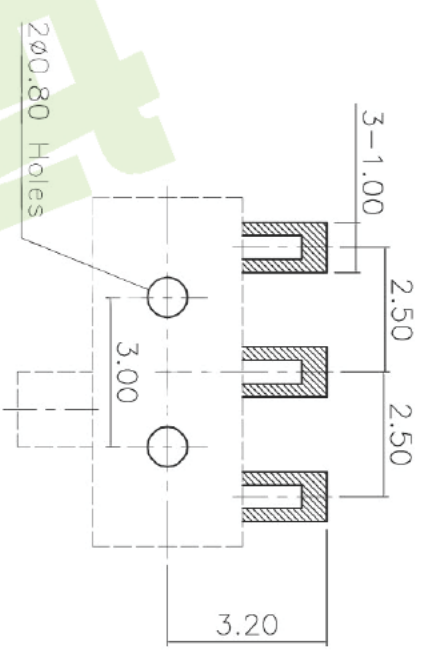


Circuit Diagram



PCB Layout(Pattern side)

Note:  
 1. Operating force:  $180 \pm 50$ gf  
 2. Travel: 1.50mm

ITEM	PART NAME	TER'NO.	QTY.	MATERIAL	FINISHING	REMARK
⑥	Spring Plate	---	1	SUS	Natural	---
⑤	Contact Spring	---	1	Phosphor Bronze	Ag Plated	---
④	Terminal	---	3	Brass Strip	Ag Plated	---
③	Base	---	1	LCP	Black	---
②	Cover	---	1	SUS	Natural	---
①	Knob	---	1	NYLON	Black	---

APPROVALS	DATE
DRAWN	2013/10/8
CHECKED	
APPROVALS	

APPROVALS		PART NO.		SCALE:		PROJ:	
CHECKED		M3-1511S		1:1		---	
APPROVALS		www.ycelectron.com		DRAWING NO.		SHEET 1 OF 1	
TOLERANCES ARE		DRAWING NO.		SCALE:		PROJ:	
30±0.15	±0.30	---		---		---	
10~30	±0.20	---		---		---	
5~10	±0.15	---		---		---	
~5	±0.10	---		---		---	

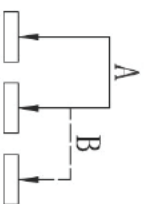
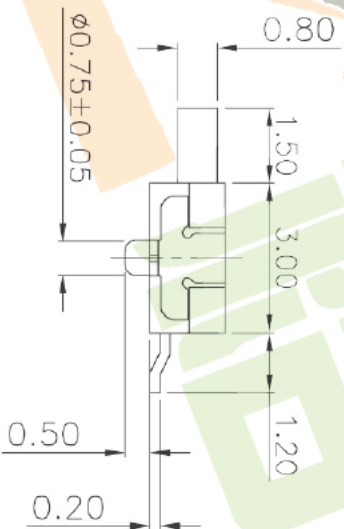
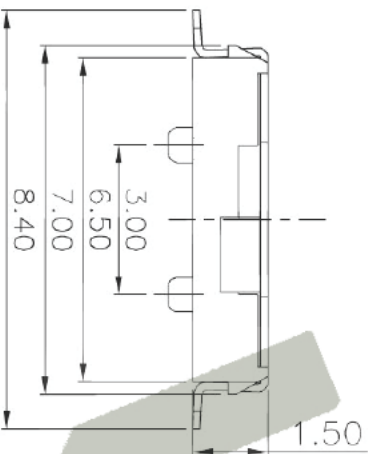
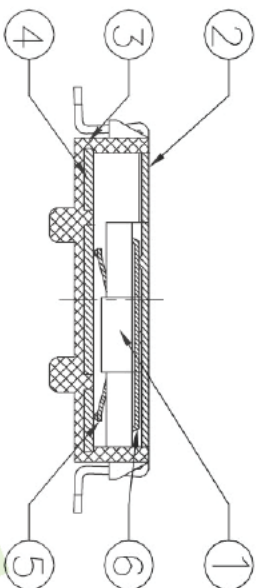
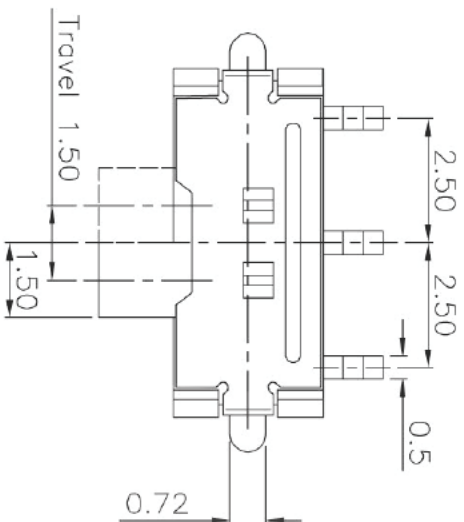
ECN NO.	REV.	DATE.	DESCRIPTION.	CHANGE.	CHECK.	APPRO.
	A		NEW			

深圳市裕诚电子有限公司  
 SHENZHEN YUCHENG ELECTRONICS CO., LTD

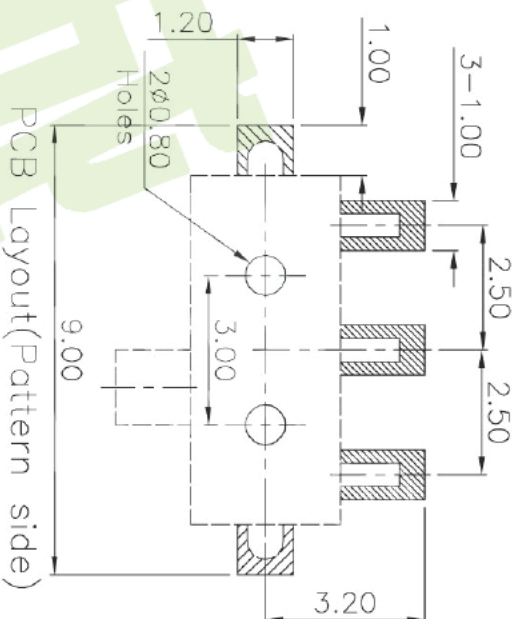
WEBSITE: www.ycelectron.com

PART NO. M3-1511S

SCALE: 1:1  
 DRAWING NO. SHEET 1 OF 1



Circuit Diagram



PCB Layout (Pattern side)

Note:  
 1. Rating: DC6V 300mA  
 1. Operating force:  $180 \pm 50$ gf  
 2. Travel: 1.50mm

ITEM	PART NAME	TER'NO.	QTY.	MATERIAL	FINISHING	REMARK
⑥	Spring Plate	—	1	SUS	Natural	—
⑤	Contact Spring	—	1	Phosphor Bronze	Ag Plated	—
④	Terminal	—	3	Brass Strip	Ag Plated	—
③	Base	—	1	LCP	Black	—
②	Cover	—	1	SUS	Natural	—
①	Knob	—	1	NYLON	Black	—

APPROVALS	DATE
DRAWN J.X.Zhang	2013/10/8
CHECKED	
APPROVALS	

深圳市裕诚电子有限公司  
 SHENZHEN YUCHENG ELECTRONICS CO., LTD

WEBSITE [www.ycelectron.com](http://www.ycelectron.com)

PART NO. M3-1511S

TOLERANCES ARE	ANGLE	UNIT: mm	SCALE: 1:1	PROJ.	SHEET 1 OF 1
30 $\pm$ 0.15	$\pm 2^\circ$	$\pm 0.30$ $\pm 0.20$ $\pm 0.15$			

ECN NO.	REV.	DATE.	DESCRIPTION.	CHANGE.	CHECK.	APPRO.
	A		NEW			