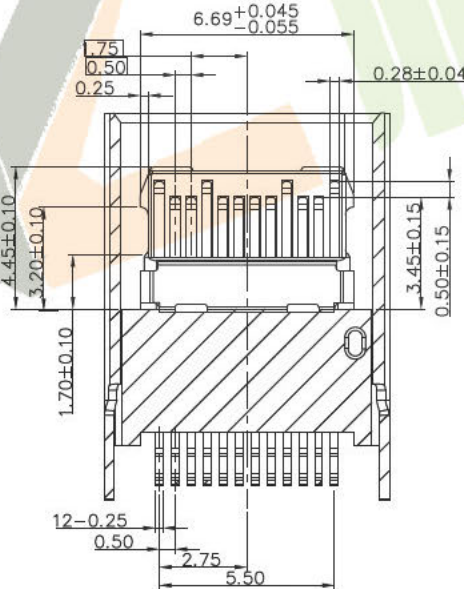
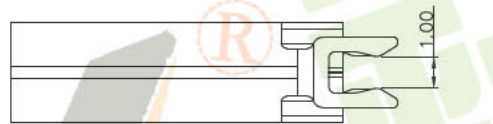
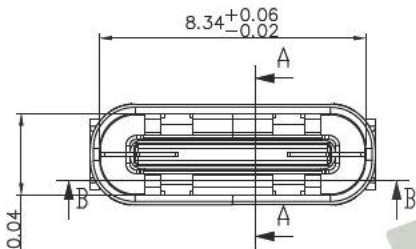
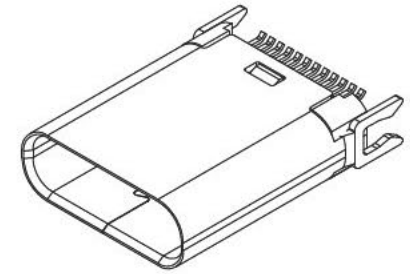


SECTION A-A
SCALE 1:1



SECTION B-B
SCALE 1:1



NOTES:

- 1.MATERIAL:
MOLDING: LCP UL94 V-0
CONTACT: COPPER ALLOY.
GOLD PLATED 30u" Min ON CONTACT AREA, 100u" Min TIN (LEAD FREE) ON SOLDER AREA,
SHELL: SUS304-H, T=0.30±0.03mm
SHILD: SUS304-H, T=0.12±0.03mm
- 2.MECHANICAL:
INSERTION: 5~20N.
EXTRACTION: 8~20N.
DURABILITY: 10000 CYCLES
- 3.ELECTRICAL:
CURRENT: 5A MIN FOR VBUS;
0.25A MIN FOR OTHER.
VOLTAGE: 5VAC MAX
WITHSTANDING VOLTAGE: 100V AC.
CONTACT RESISTANCE: 40mΩ MAX.
INSULATION RESISTANCE: 100MΩ MIN.
- 4.ENVIRONMENTAL
TEMPERATURE RANGE -55°C ~ +85°C

RoHS Compliant

TOLERANCE UNSPECIFIED . ±0.50 .0 ±0.38 .00 ±0.25 .000 ±0.10 ANGLE ±3.00° MANUFACTURING COPY		 深圳市裕诚电子有限公司 SHENZHEN YUCHENG ELECTRONICS CO., LTD	
		TITLE: USB 3.1 C TYPE FEMALE SPLINT 1.00 MM CONNECTOR	
DRAWN BY: 陈雅	SIZE: A4	产品料号 PRODUCT PART NO.	TYPE-C-J105
CHECKED BY: 洪章波	SCALE: 1:1	PROJECTION	REV.: XA
APPROVED BY: 魏杰	DWG. PATH	www.ycelectron.com	SHEET: 1/3

5.P/N:

FU C R - 24 5 X - 02 - X X

A:USB A TYPE
B:USB B TYPE
C:USB C TYPE
M:MINI USB
D:MICRO USB B TYPE
E:MICRO USB AB TYPE

产品形态
P:PLUG
R:Receptable

端子PIN数:
04-24

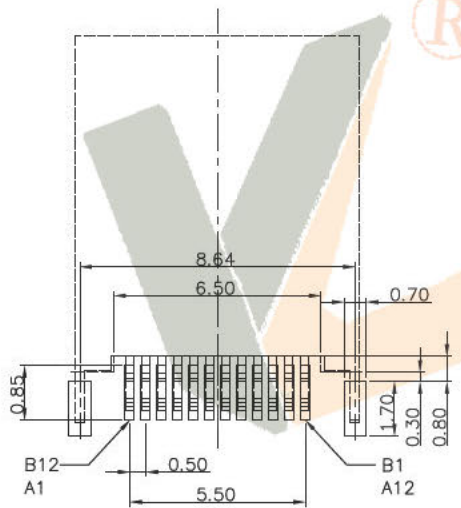
端子形态:
1:RIGHT ANGLE DIP
2:STRAIGHT DIP
3:RIGHT ANGLE SMT
4:STRAIGHT SMT
5:Splint(夹板式)

包装:
T: TARY(盒子)

胶芯颜色:
B: BLCK
N: NATURE

系列码

K: GOLD FLASH PLATING ON CONTACT AREA
Matte Tin PLATING ON SOLDER AREA
M: 5u" GOLD PLATING ON CONTACT AREA
Matte Tin PLATING ON SOLDER AREA
P: 15u" GOLD PLATING ON CONTACT AREA
Matte Tin PLATING ON SOLDER AREA
U: 30u" GOLD PLATING ON CONTACT AREA
Matte Tin PLATING ON SOLDER AREA



RECOMMENDED P.C.B. LAYOUT (T:1.00mm)
TOLERANCE UNSPECIFIED ±0.05mm

USB TYPE-C FULL-FEATURED RECEPTACLE INTERFACE PIN ASSIGNMENTS

PIN	Signal Name	Description	PIN	Signal Name	Description
A1	GND	Ground return	B12	GND	Ground return
A2	SSTXp1	Positive half of first SuperSpeed TX differential pair	B11	SSTXp1	Positive half of first SuperSpeed TX differential pair
A3	SSTXn1	Negative half of first SuperSpeed TX differential pair	B10	SSTXn1	Negative half of first SuperSpeed TX differential pair
A4	Vbus	Bus Power	B9	Vbus	Bus Power
A5	CC1	Configuration Channel	B8	CC1	Configuration Channel
A6	Dp1	Positive half of the USB 2.0 differential pair-Position 1	B7	Dp1	Positive half of the USB 2.0 differential pair-Position 1
A7	Dn1	Negative half of the USB 2.0 differential pair-Position 1	B6	Dn1	Negative half of the USB 2.0 differential pair-Position 1
A8	RFU1	Reserved for Future Use (RFU)	B5	RFU1	Reserved for Future Use (RFU)
A9	Vbus	Bus Power	B4	Vbus	Bus Power
A10	SSRXn2	Negative half of second SuperSpeed RX differential pair	B3	SSRXn2	Negative half of second SuperSpeed RX differential pair
A11	SSRXp2	Positive half of second SuperSpeed RX differential pair	B2	SSRXp2	Positive half of second SuperSpeed RX differential pair
A12	GND	Ground return	B1	GND	Ground return

RoHS Compliant

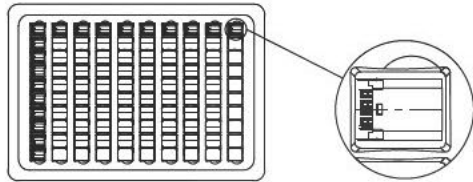
TOLERANCE UNSPECIFIED	±0.50
.0	±0.38
.00	±0.25
.000	±0.10
ANGLE	±3.00°
MANUFACTURING COPY	

深圳市裕诚电子有限公司
SHENZHEN YUCHENG ELECTRONICS CO., LTD

TITLE:USB 3.1 C TYPE FEMALE SPLINT 1.00 MM CONNECTOR

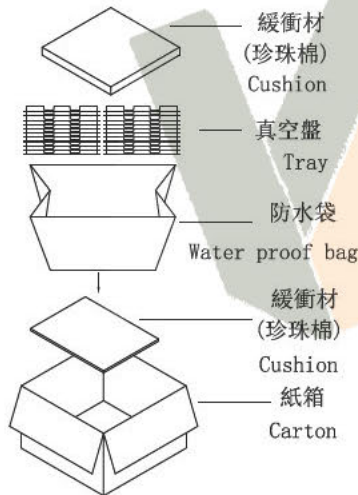
DRAWN BY:	陈雅	SIZE:A4	产品料号 PRODUCT PART NO.	TYPE-C-J105
CHECKED BY:	洪章波	SCALE: 1:1	PROJECTION	REV.: XA
APPROVED BY:	魏杰	DWG. PATH	www.ycelectron.com	SHEET:2/3

一.
將成品依同一方向放入真空盤內, 如圖所示。
At same direction, put product onto the tray. Direction refers to below drawing.



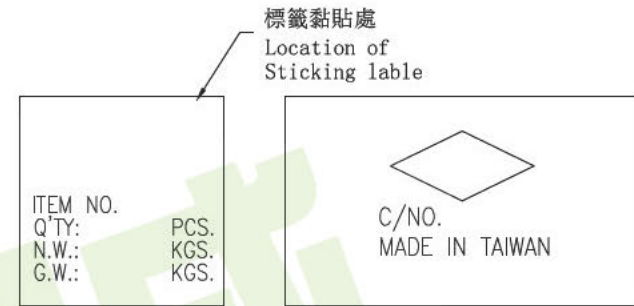
VIEW-1

- 二.
- 1) 一只紙箱可放置之包裝盤(包括上蓋)見下表。
1) trays per carton, please see next table.
 - 2). 每1個紙箱用的包裝數量詳見下表。
2) The Q'ty of products per carton please see next table.
 - 3) 將裝滿成品的真空盤用 PE帶捆緊後放在塑膠袋內, 裝完後再封箱。
3) Bind the trays with PE tape and then, put them into the poly bag. Seal the carton with tape.



VIEW-2

三.
1). 將標籤貼於紙箱側上方。
Stick the needful label On the up-right corner of the side of carton.



VIEW-3

備 註(REMARK)

1. 若有未裝滿之零數箱, 必須以緩衝材塞滿。
The unfilling-carton must be filled with assuagement.
2. 防水袋需用膠帶貼實且封口。
waterproof plastic bag must be folded up.
3. 裝滿成品后之外箱, 最大堆積箱數: 5箱
About the box fully filled with products, the MAX accumulating quantity of boxes is 5.
4. 如須貼Bar-code, 請依Bar-code作業辦法執行
If barcode lable is required, do it according to the related barcode lable operation standards.

RoHS Compliant

包裝明細表 (The detail of the packing)

產品料號 (Product No.)	包裝容量 (Packing Capacity)			重量 Weight (Kg)		
	pcs/box	boxs/Carton	Pcs/Box	N.W./Pcs	N.W./Box	G.W./Box
TYPE-C-J105	100	50	5000			

TOLERANCE UNSPECIFIED	
.	±0.50
.0	±0.38
.00	±0.25
.000	±0.10
ANGLE	±3.00°
MANUFACTURING COPY	



深圳市裕誠電子有限公司
SHENZHEN YUCHENG ELECTRONICS CO., LTD

TITLE: USB 3.1 C TYPE FEMALE SPLINT 1.00 MM CONNECTOR

DRAWN BY:	陈雅	SIZE: A4	產品料号 PRODUCT PART NO.	TYPE-C-J105
CHECKED BY:	洪章波	SCALE: 1:1	PROJECTION	REV.: XA
APPROVED BY:	魏杰	DWG. PATH	www.ycelectron.com	SHEET: 3/3