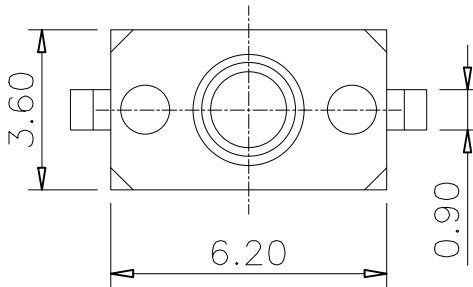
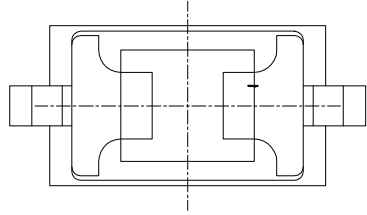
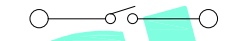


RoHS Compliant

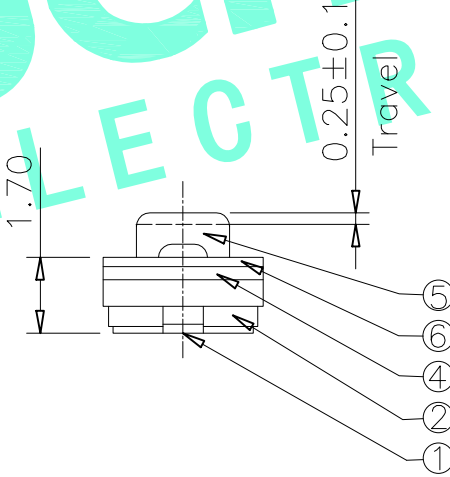
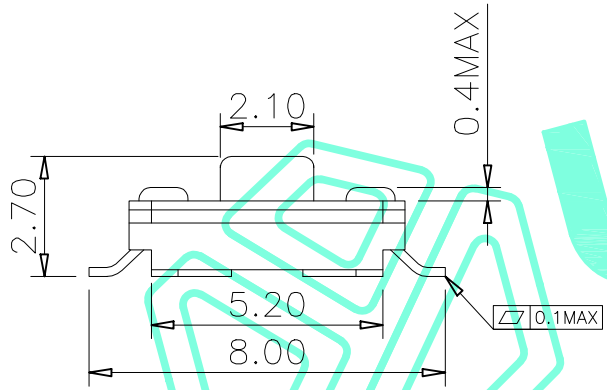
REV. A/0	DESCRIPTION NEW	DESIGN CWF	DATE
-------------	--------------------	---------------	------



Typical Specifications
 1. Rating : DC 12V 50mA
 2. Contact Resistance: $\leq 100m\Omega$
 3. Insulation Resistance: $\geq 100M\Omega$ DC250V
 4. Operating Temperature Range:
 $-26 + 80$
 5. Ambient Humidity Used: $\leq 85\%RH$
 6. Travel: $0.25 \pm 0.1mm$
 7. Life : 100,000 Cycles
 8. IP Rating: IP65

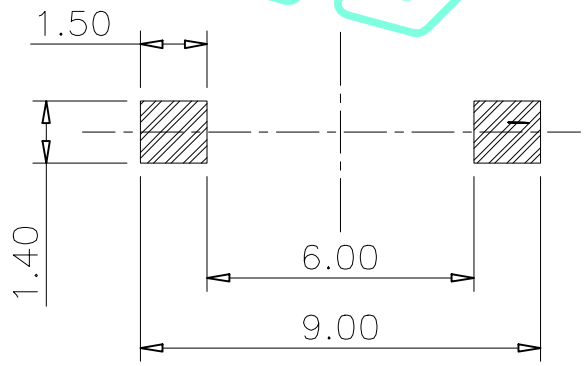


Circuit Diagram



NO.1

PART NO	vigor
3	180±30
4	250±30



PCB Layout(Pattern side)

ITEM	PART NAME	QTY.	MATERIAL	FINISHING
⑥	Cover	1	SUS	Tin Plated
⑤	Keystoke	1	RUBBE	Black
④	Waterproof Silicone	1	Silica gel	Black
③	Contact	1	F.Ag/SUS	Plating silver
②	Base	1	PA6T	Black
①	Terminal	2	Copper(0.2t)	Plating silver

THESE DRAWINGS AND SPECIFICATIONS ARE THE PROPERTY OF SHENZHEN YUCHENG ELECTRONICS.LTD.AND SHALL NOT BE REPRODUCED,COPIED OR USED IN ANY MANNER WITHOUT THE PRIOR WRITTEN CONSENT OF SHENZHEN YUCHENG ELECTRONICS.LTD

APPROVED: WEI JIE
 CHECKED: HONG JIN YUN
 DRAWING: CHEN YA

UCHENG ELECTRONICS 深圳市裕诚电子有限公司
 SHENZHEN YUCHENG ELECTRONICS CO.,LTD

GENERAL TOLERANCES	TITLE:	TACT SWITCH		
30~以上 ±0.30	PART NO:	M2-1707P-NO.1		
10~30 ±0.20	WEBSITE:	www.ycelectron.com		
5~10 ±0.15	REV: A	UNIT: mm	SCALE: /	SHEET: A4
~ 5 ±0.10	SHEET: 1 / 1			