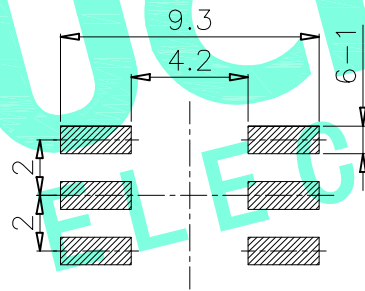
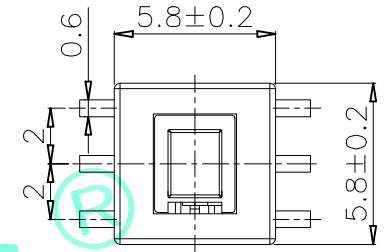
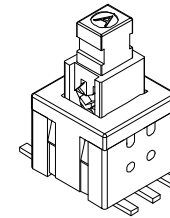
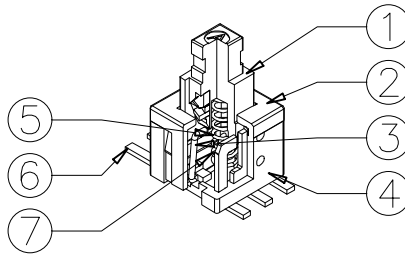
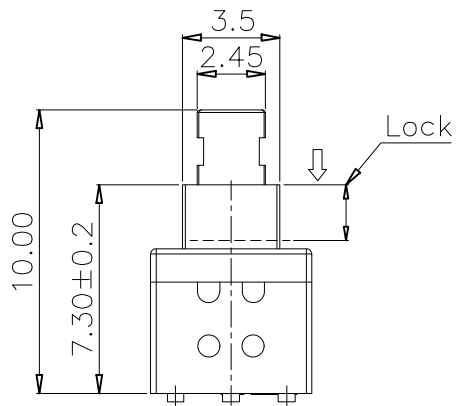
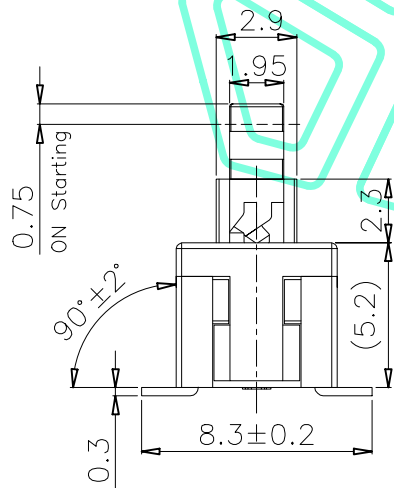


RoHS Compliant

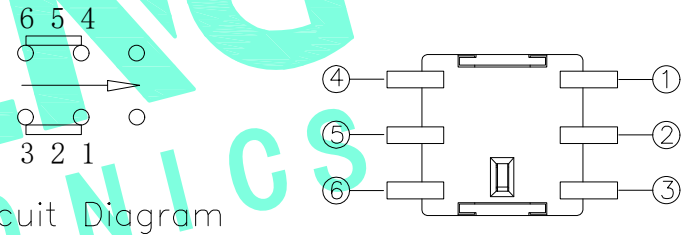
REV. A/0	DESCRIPTION NEW	DESIGN CWF	DATE
-------------	--------------------	---------------	------



PCB Layout(Pattern Side)



NOTE:  
1.Operating Force: 180gf±50gf



Circuit Diagram

NO.	Operating Type	Part No.
1	Push To Lock	M8-1233D-D
2	Push No Lock	M8-1233D-W
3	Push No Sound No Lock	M8-1233D-J

⑦	Contact	2	Phosphor bronze	Plating silver
⑥	Terminal	6	Brass strip	Plating silver
⑤	Spring	1	SUS	Natural
④	Base	1	Nylon	Black
③	Crochet Needle	1	SUS	Natural
②	Cover	1	POM	Gray
①	KNOB	1	POM	Gray
ITEM	PART NAME	QTY.	MATERIAL	FINISHING

THESE DRAWINGS AND SPECIFICATIONS ARE THE PROPERTY OF SHENZHEN YUCHENG ELECTRONICS,LTD.AND SHALL NOT BE REPRODUCED,COPIED OR USED IN ANY MANNER WITHOUT THE PRIOR WRITTEN CONSENT OF SHENZHEN YUCHENG ELECTRONICS,LTD



深圳市裕诚电子有限公司  
SHENZHEN YUCHENG ELECTRONICS CO.,LTD

APPROVED:	WEI JIE
CHECKED:	HONG JIN YUN
DRAWING:	CHEN YA

GENERAL TOLERANCES		TITLE:	
30~以上	±0.30	PUSHBUTTON SWITCHES	
10~30	±0.20	PART NO:	
5~10	±0.15	M8-1233D	
~ 5	±0.10	WEBSITE :	
SHEET: 1 / 1		www.ycelectron.com	
REV: A	UNIT: mm	SCALE: /	SHEET: A4

