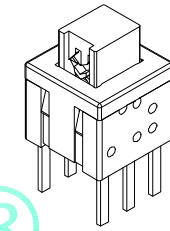
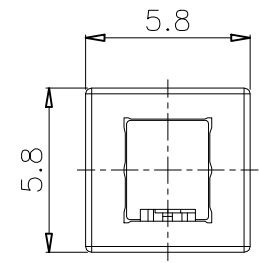
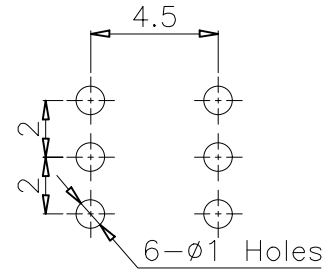
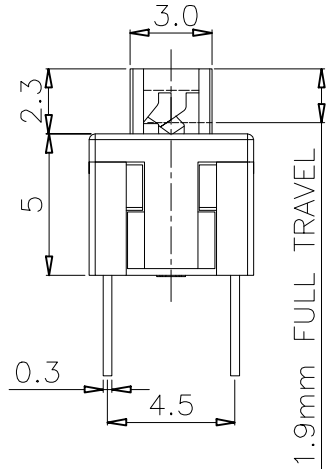
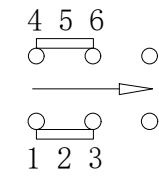


RoHS Compliant

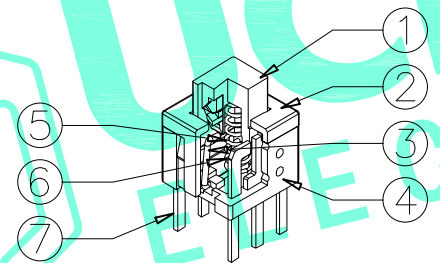
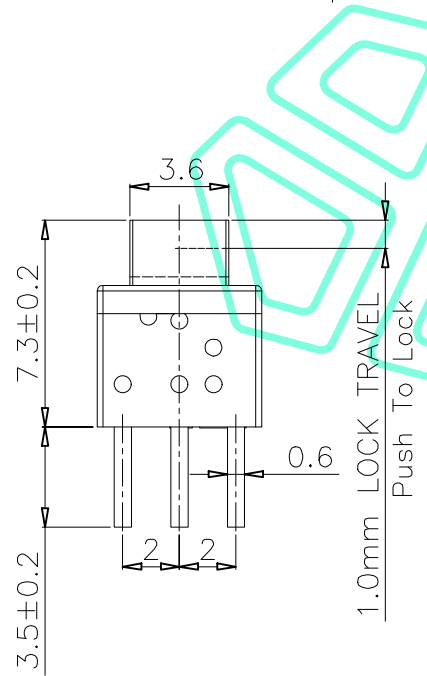
REV. A/0	DESCRIPTION NEW	DESIGN CWF	DATE
----------	-----------------	------------	------



PCB Layout(Pattern Side)



Circuit Diagram



NOTE:
 1. Operating Force: 180gf \pm 80gf
 2. Travel : 1.9 \pm 0.25mm

NO.	Operating Type	Part No.
1	Push To Lock	M8-1218E-D
2	Push No Lock	M8-1218E-W
3	Push No Sound No Lock	M8-1218E-J

⑦	Terminal	6	Brass strip	Plating silver
⑥	Contact	2	Phosphor bronze	Plating silver
⑤	Spring	1	SUS	Natural
④	Base	1	Nylon	Gray
③	Crochet Needle	1	SUS	Natural
②	Cover	1	POM	Black
①	KNOB	1	POM	White
ITEM	PART NAME	QTY.	MATERIAL	FINISHING

THESE DRAWINGS AND SPECIFICATIONS ARE THE PROPERTY OF SHENZHEN YUCHENG ELECTRONICS, LTD. AND SHALL NOT BE REPRODUCED, COPIED OR USED IN ANY MANNER WITHOUT THE PRIOR WRITTEN CONSENT OF SHENZHEN YUCHENG ELECTRONICS, LTD.

APPROVED: WEI JIE
 CHECKED: HONG JIN YUN
 DRAWING: CHEN YA

YUCHENG ELECTRONICS 深圳市裕诚电子有限公司
 SHENZHEN YUCHENG ELECTRONICS CO.,LTD

GENERAL TOLERANCES		TITLE:	PUSHBUTTON SWITCHES	
30~以上	\pm 0.30	PART NO:	M8-1218E	
10~30	\pm 0.20	WEBSITE:	www.ycelectron.com	
5~10	\pm 0.15	REV: A	UNIT: mm	SCALE: /
~ 5	\pm 0.10	SHEET: 1 / 1	SHEET: A4	