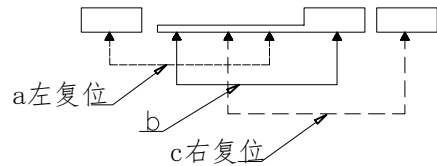
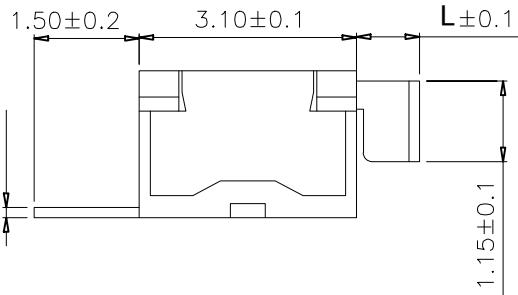
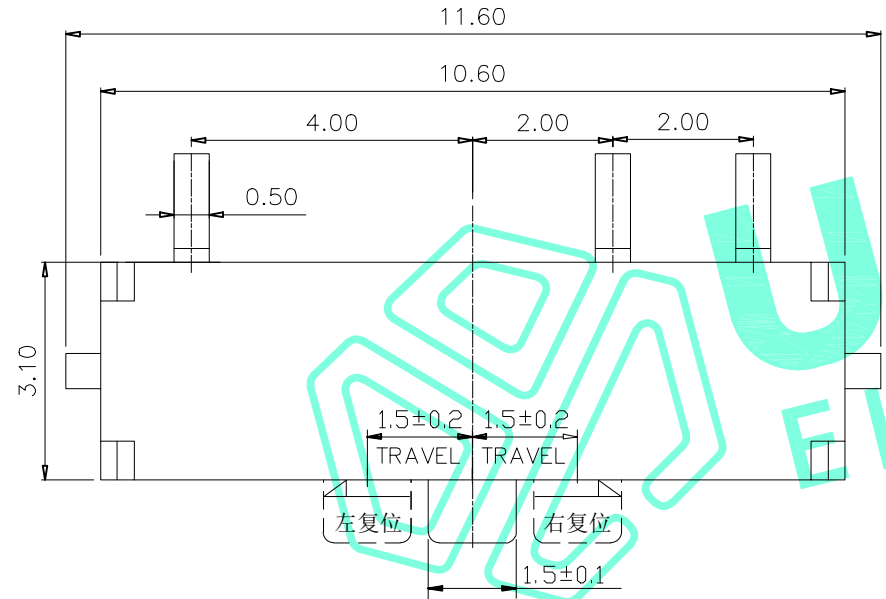
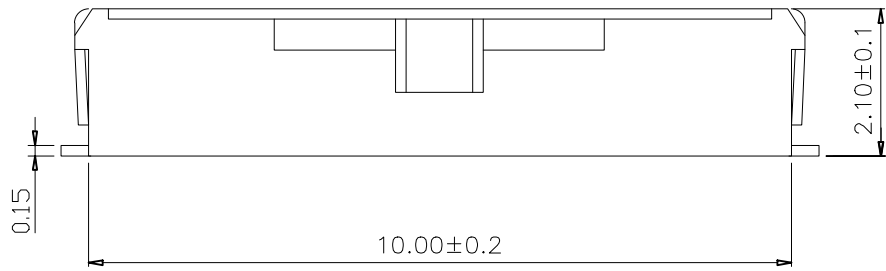
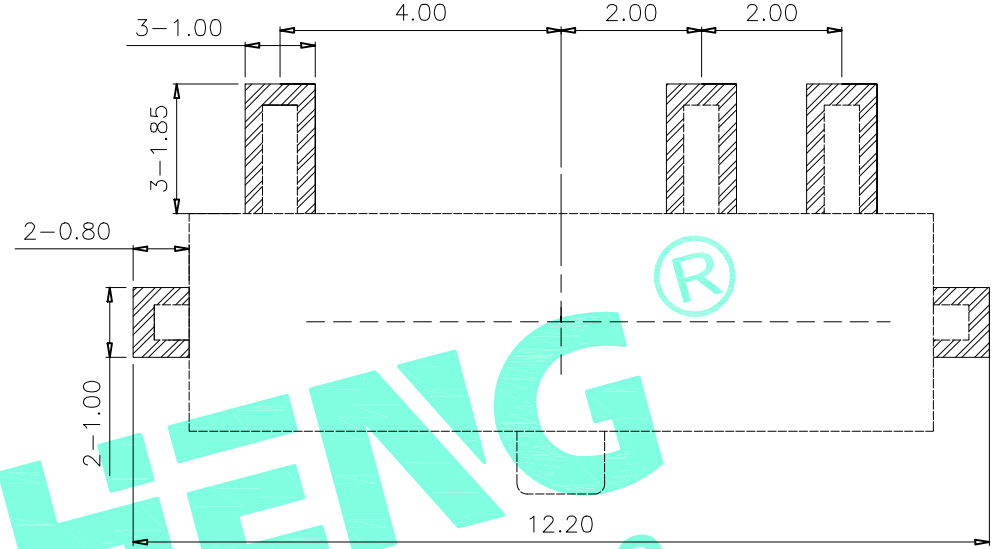


RoHS Compliant

REV. A/0	DESCRIPTION NEW	DESIGN CWF	DATE
----------	-----------------	------------	------



Schematic(Shorting)



P.C.B layout

Typical Specifications

1. Rating : 12V 0.1A DC
2. Operating force: 130±50gf
3. Operating Life : 10,000 cycles

PART NO.	L
M3-2561S-L0.9	0.9
M3-2561S-L1.5	1.5

ITEM	PART NAME	QTY.	MATERIAL	FINISHING
⑥	Cover	1	Stainless Steel	Natural
⑤	Spring	1	Stainless Steel	Natural
④	Contact Clip	1	C5210	Ag Clad
③	Knob	1	PA	DarkCyan
②	Base	1	LCP	Black
①	Terminal	3	Brass	Ag Plated

THESE DRAWINGS AND SPECIFICATIONS ARE THE PROPERTY OF SHENZHEN YUCHENG ELECTRONICS,LTD AND SHALL NOT BE REPRODUCED, COPIED OR USED IN ANY MANNER WITHOUT THE PRIOR WRITTEN CONSENT OF SHENZHEN YUCHENG ELECTRONICS,LTD



深圳市裕诚电子有限公司
SHENZHEN YUCHENG ELECTRONICS CO.,LTD

APPROVED:	WEI JIE	GENERAL TOLERANCES	TITLE:	TOGGLE SWITCH
CHECKED:	HONG JIN YUN	30~以上 ±0.30	PART NO.:	M3-2561S
DRAWING:	CHEN YA	10~30 ±0.20	WEBSITE:	www.ycelectron.com
		5~10 ±0.15	REV: A	UNIT: mm
		~ 5 ±0.10		SCALE: /
		SHEET: 1 / 1		SHEET: A4

