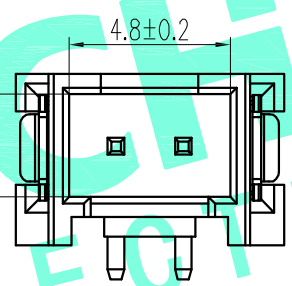
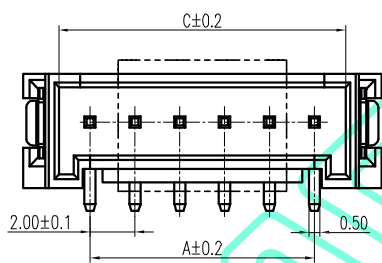
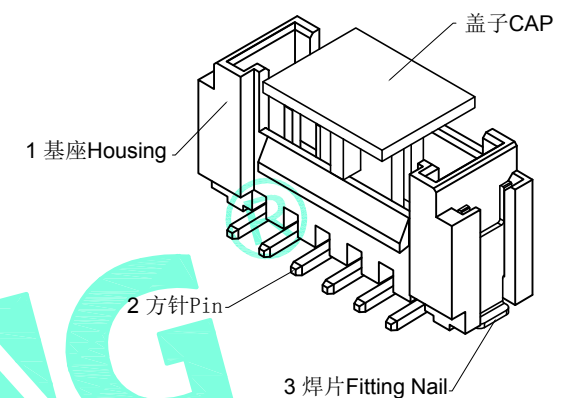
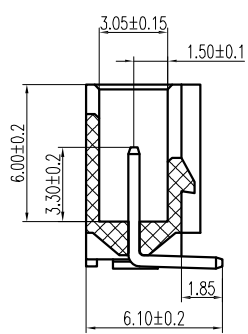
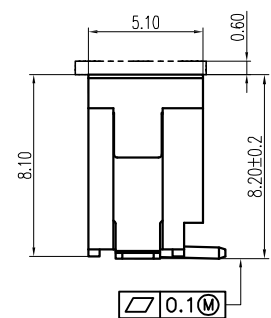
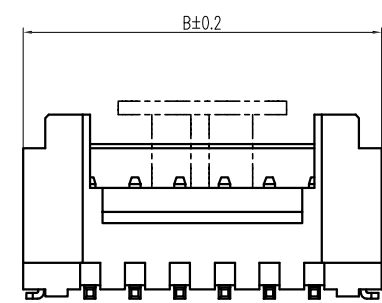
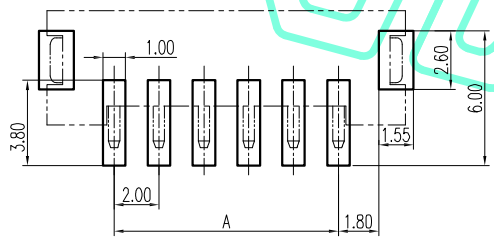


RoHS Compliant

REV. A/0	DESCRIPTION NEW	DESIGN CWF	DATE
----------	-----------------	------------	------



2PIN



PCB LAYOUT

Part No	DIM A	DIM B	DIM C
HY-2A	2.00	8.00	4.80
HY-3A	4.00	10.00	6.80
HY-4A	6.00	12.00	8.80
HY-5A	8.00	14.00	10.80
HY-6A	10.00	16.00	12.80
HY-7A	12.00	18.00	14.80
HY-8A	14.00	20.00	16.80
HY-9A	16.00	22.00	18.80
HY-10A	18.00	24.00	20.80
HY-11A	20.00	26.00	22.80
HY-12A	22.00	28.00	24.80
HY-13A	24.00	30.00	26.80
HY-14A	26.00	32.00	28.80
HY-15A	28.00	34.00	30.80
HY-16A	30.00	36.00	32.80

说明:

1. 产品表面清洁, 无锈蚀、氧化、裂纹、缺芯、毛刺、及其它机械损伤;
2. 塑胶材料: 耐高温树脂 颜色: 本色;
3. 插针材料: 黄铜, 镀锡;
4. 焊片材料: 黄铜, 镀锡

序号	名称	数量
1	基座	1
2	阳接触针	n
3	焊片	2

THESE DRAWINGS AND SPECIFICATIONS ARE THE PROPERTY OF SHENZHEN YUCHENG ELECTRONICS, LTD AND SHALL NOT BE REPRODUCED, COPIED OR USED IN ANY MANNER WITHOUT THE PRIOR WRITTEN CONSENT OF SHENZHEN YUCHENG ELECTRONICS, LTD

UCHENG ELECTRONICS 深圳市裕诚电子有限公司
SHENZHEN YUCHENG ELECTRONICS CO.,LTD

APPROVED:	WEI JIE	GENERAL TOLERANCES	TITLE:	XHB-AW型连接器		
CHECKED:	HONG JIN YUN	>0-3 ±0.15	PART NO:	2.0立式贴片-Part No		
DRAWING:	CHEN YA	>3-18 ±0.2	WEBSITE:	www.ycelectron.com		
		>18-50 ±0.35	REV: A	UNIT: mm	SCALE: /	SHEET: A4
		>50-120 ±0.5	SHEET: 1 / 1			