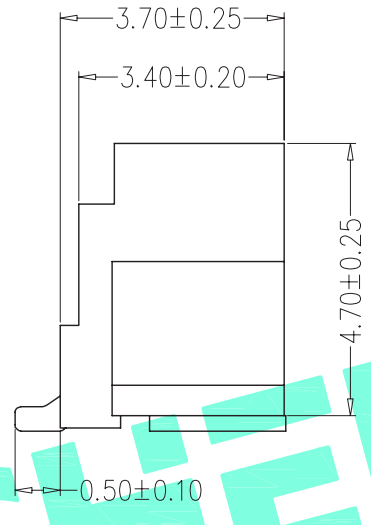
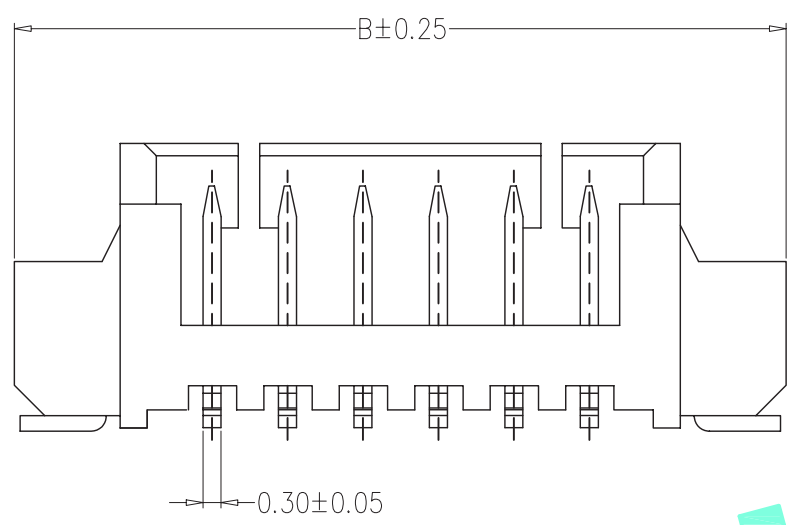


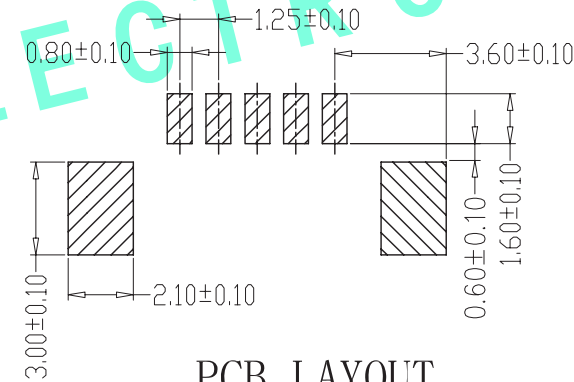
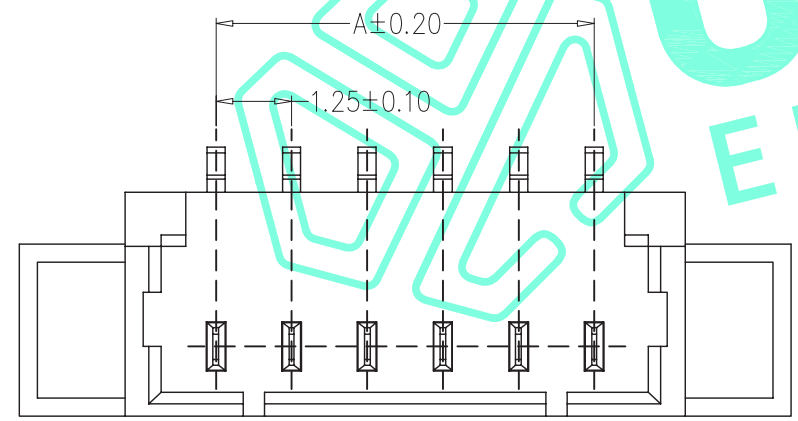
RoHS Compliant

REV. A/0	DESCRIPTION NEW	DESIGN CWF	DATE
-------------	--------------------	---------------	------



SPECIFICATIONS

- 1、Current Rating: 1A AC, DC
- 2、Voltage Rating: 125V AC, DC
- 3、Temperatuer Range: $-25^{\circ}\text{C} \sim +85^{\circ}\text{C}$
- 4、Contact Resistance: $20\text{m}\Omega$ Max
- 5、Insulation Resistance: $100\text{m}\Omega$ Min
- 6、Withstanding Voltang: 500V AC/minute
- 7、Material: Wafer Nylon46, UL94V-0
PIN Phosphoric copper Tin-plated
Solder tads Phosphoric copper Tin-plated



PCB LAYOUT

编号	尺寸 (mm)	
	A	B
A1251LF-02A	1.25	7.35
A1251LF-03A	2.50	8.60
A1251LF-04A	3.75	9.85
A1251LF-05A	5.00	11.10
A1251LF-06A	6.25	12.35
A1251LF-07A	7.50	13.60
A1251LF-08A	8.75	14.85
A1251LF-09A	10.00	16.10
A1251LF-10A	11.25	17.35
A1251LF-11A	12.50	18.60
A1251LF-12A	13.75	19.85
A1251LF-15A	17.50	23.60

THESE DRAWINGS AND SPECIFICATIONS ARE THE PROPERTY OF SHENZHEN YUCHENG ELECTRONICS,LTD.AND SHALL NOT BE REPRODUCED,COPIED OR USED IN ANY MANNER WITHOUT THE PRIOR WRITTEN CONSENT OF SHENZHEN YUCHENG ELECTRONICS.,LTD

APPROVED: WEI JIE

CHECKED: HONG JIN YUN

DRAWING: CHEN YA

UCHENG ELECTRONICS 深圳市裕诚电子有限公司
SHENZHEN YUCHENG ELECTRONICS CO.,LTD

GENERAL TOLERANCES		TITLE: 1.25立贴针座	
$X \pm 0.25$	$X \pm 2^{\circ}$	PART NO: A1251LF-NA	
$.X \pm 0.20$	$.X \pm 1^{\circ}$	WEBSITE: www.ycelectron.com	
$.XX \pm 0.15$	$.XX \pm 0.5^{\circ}$	REV: A UNIT: mm SCALE: / SHEET: A4	
$.XXX \pm 0.10$	$.XXX \pm 0.5^{\circ}$	SHEET: 1 / 1	